



Beattys

PERFORMANCE
POWERED BY
HYDRAULICS.



HYDRAULIC
EQUIPMENT

WHY BEATTYS.

With over fifty years of industry experience, we are experts in helping customers to take advantage of new technology to increase productivity and reduce downtime and service costs. Our core mission is you. We aim to deliver the best possible in design, manufacturing and support for whatever your need or circumstance is. We have experience with many hydraulic systems and have the expertise to integrate our products with many different machine brands.



WHY HYDRAULICS.

Hydraulic energy is the most reliable and size efficient way of transferring power in mobile machines. It's used everywhere from aeroplanes flying sky-high, to unmanned submarines searching the bottom of the ocean. Cost-efficient and emission-free make hydraulics the preferred choice for many applications. By using these systems we can increase your productivity and while reducing downtime and service costs.

PREMIUM QUALITY.

Our alliances with strategically selected international suppliers allow us to ensure that the highest level of performance and reliability is maintained. With all products coming standard with a two-year warranty you can be ensured that every product we put our name on lives up to our motto on 'Optimal performance, whatever the challenge'.





GET IN TOUCH.

Have questions? Need advice? We're here for you 24/7 with technical support and years of industry knowledge.

Call Us

0800 800 852

Find Us Online

beattys.com

GENERATORS.

These hydraulic generators boast the best power to size ratio out of any generator in the world. With the guarantee of easy installation and operation, our range of generators make light work of demanding tasks for all contractors and other users. A new generation of hydraulic motors make for even more efficient operation and dramatically reduce sound levels making for a pleasant experience for extended use intervals.



OPTIONS:

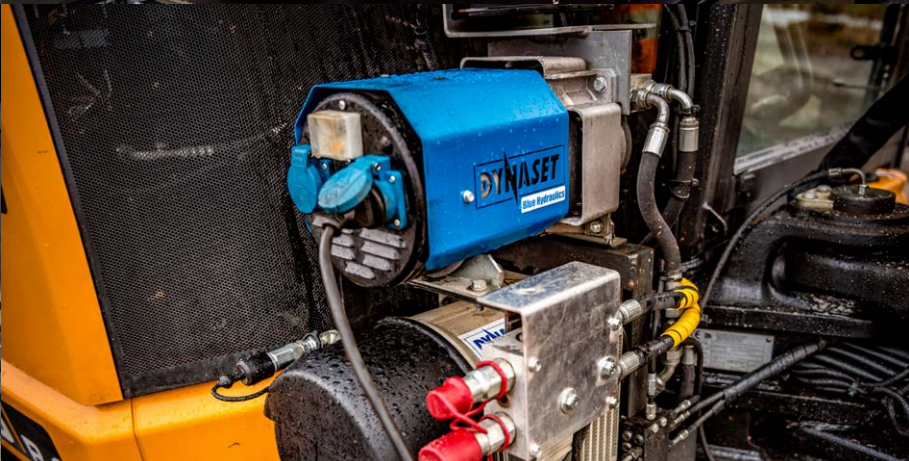
- Weather protection cover.
- Flow limiting valves.
- Solenoid valve with oil flow limiter.
- Pressure relief valve for RPM-control cartridge.
- External control box with outlets.
- Custom models designed for specific client needs.

FEATURES:

- The ultra-compact design ensures easy installation and saves valuable space on the parent machine.
- Ability to install on any type of machinery with a hydraulic system.
- The reliable and maintenance-free design ensures downtime is reduced to a minimum.
- Eliminates the need to move heavy engine-driven generators around the site and the need to carry hazardous fuel containers.
- State-of-the-art hydraulic motors ensure continues quiet operation.
- Heavy duty twin poll coils.
- A built-in automatic frequency control valve regulates the frequency to 50 or 60 Hz.
- The automatic voltage regulator (AVR) maintains the voltage at a steady level in accordance with international standards.
- Built-in residual current device and safety earth leakage relay protects users from electrocution.
- Circuit overload protection to prevent overheating and damage to the generator.

		HG 3.5	HG 5.0	HG 6.5
Width	mm	220	212	212
Length	mm	423	461	508
Height	mm	217	230	326
Weight	kg	24	29	43
Output Power	kVA	3.5	5	6.5
Output Voltage	V	230	230	230 / 400
Output Current	A	15.2	21.7	14.2 / 9.4
Number Of Phases		1	1	1 / 3
Voltage Regulator Type		Capacitor	Capacitor	AVR
Min Hydraulic Flow	l/min	18	23	37
Max Hydraulic Flow	l/min	23	35	55
Operating Hydraulic Pressure	bar (psi)	165 (2,390)	170 (2,470)	180 (2,610)
Max Hydraulic Pressure	bar (psi)	210 (3,050)	210 (3,050)	210 (3,050)





HG 10	HG 12	HG 19	HG 26	HG 35	HG 45	HG 65	HG 80
212	290	293	323	323	392	392	392
567	587	638	641	742	964	1069	1086
326	352	395	374	374	480	480	480
57	60	105	100	132	279	285	279
10	12	19	26	35	45	65	80
230 / 400	230 / 400	230 / 400	230 / 400	230 / 400	230 / 400	230 / 400	230 / 400
21.7 / 14.4	26.1 / 17.3	41.4 / 27.4	56.3 / 37.5	75 / 50.5	97.4 / 64.9	140.7 / 93.8	173.2 / 115.4
1 / 3	1 / 3	1 / 3	1 / 3	1 / 3	1 / 3	1 / 3	1 / 3
AVR	AVR	AVR	AVR	AVR	AVR	AVR	AVR
52	56	66 / 83	83	103	93	123	183
78	84	99 / 113	113	133	123	153	213
180 (2,610)	180 (2,610)	250 / 190 (3,630 / 2,760)	250 (3,630)	270 (3,920)	370 (5,370)	405 (5,870)	330 (4,790)
210 (3,050)	210 (3,050)	260 / 280 (3,770 / 4,060)	280 (4,060)	280 (4,060)	420 (6,090)	420 (6,090)	420 (6,090)

WELDERS.

Our hydraulic welding generators boast the best power to size ratio out of supplier in the world. High-quality welding current from 180 A up to 400 A with the guarantee of easy installation and operation, these units make light work of demanding tasks for all contractors and other users. A new generation of hydraulic motors make for even more efficient operation and dramatically reduce sound levels making for a pleasant experience for extended use intervals.



OPTIONS:

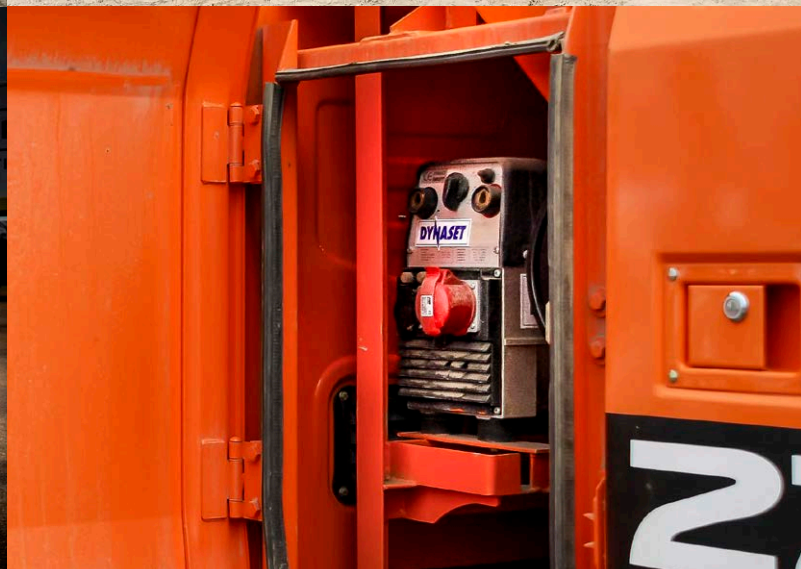
- Flow limiting valves.
- Solenoid valve with oil flow limiter.
- Pressure relief valve for RPM-control cartridge.
- Custom models designed for specific client needs.

FEATURES:

- The ultra-compact design ensures easy installation and saves valuable space on the parent machine.
- Ability to install on any type of machinery with a hydraulic system.
- The reliable and maintenance-free design ensures downtime is reduced to a minimum.
- Eliminates the need to move heavy engine-driven generators around the site and the need to carry hazardous fuel containers.
- State-of-the-art hydraulic motors ensure continuous quiet operation.
- Heavy duty twin poll coils.
- Automatic welding current control maintains continuous current.
- The automatic voltage regulator (AVR) maintains the voltage at a steady level in accordance with international standards.
- Built-in residual current device and safety earth leakage relay protects users from electrocution.
- Circuit overload protection to prevent overheating and damage to the generator.

	HWG 180	HWG 220	HWG 300	HWG 400
Width mm	212	212	285	318
Length mm	563	567	613	801
Height mm	345	370	434	544
Weight kg	51	52	92	132
Welding Current ADC	40 - 180	30 - 220	40 - 300	30 - 400
Welding Voltage VDC	21.5 - 28.8	21.5 - 28.8	21.5 - 32	22 - 36
Welding Electrode Size mm	4	5	6	7
Auxiliary Output Voltage V	230 / 400	230 / 400	230 / 400	230 / 400
Auxiliary Output Power kVA	3 / 6	3 / 6	4 / 10	4 / 10
Auxiliary Output Current A	13 / 8.7	13 / 8.7	17.4 / 14.4	17.4 / 14.4
Min Hydraulic Flow l/min	36	51	56	81
Max Hydraulic Flow l/min	53	68	88	101
Operating Hydraulic Pressure bar (psi)	190 (2,760)	155 (2,250)	175 (2,540)	200 (2,900)
Max Hydraulic Pressure bar (psi)	210 (3,050)	210 (3,050)	210 (3,050)	210 (3,050)





LIFTING MAGNETS.

Our hydraulic driven lifting magnet's are a complete all-in-one unit with an integrated magnet generator. Boasting the world's fastest demagnetizing time 0.8 seconds makes for a lightning fast operation. Increase your productivity with a true plug & play magnet ready to be used straight from the box in any application.



OPTIONS:

- Claws.
- Quick hitch mount.
- Grapple mount.
- Additional power outlet on magnet.
- Custom models designed for specific client needs.

FEATURES:

- The unit can be swapped between machines quickly and easily.
- Quick easy connection to existing auxiliary hydraulic lines on the excavator.
- World's fastest demagnetizing time of 0.8 seconds.
- Compact all in-one-unit and with a durable, waterproof design.
- No electric cable, reducing health and safety risks.
- The generator is fully enclosed in the HMAG's steel cover.
- Includes two hydraulic hoses and lifting chains.

		HMAG PRO 700	HMAG PRO 900	HMAG PRO 1200	HMAG PRO 1400
Diameter	mm	750	960	1260	1450
Height	mm	640	780	830	780
Weight	kg	440	900	1,550	2,900
Generator Power	kW	3	6	10	12
Magnet Coil Power	kW	2.7	5.5	9.5	11
Tear Off	kg	5,500	10,500	15,000	34,000
Metal Slab	kg	2,700	5,250	7,500	9,500
Scrap (Grade 24)	kg	70	190	360	900
Min Hydraulic Flow	l/min	23	37	53	63
Max Hydraulic Flow	l/min	37	53	68	77
Operating Hydraulic Pressure	bar (psi)	190 (2,760)	190 (2,760)	190 (2,760)	190 (2,760)
Max Hydraulic Pressure	bar (psi)	350 (5,080)	350 (5,076)	350 (5,080)	350 (5,080)





LIFTING MAGNETS.

We have a large range off stand-alone lifting magnet's available for all applications. The low profile design allows for easy operation. Guaranteed to increase your productivity with the world's fastest demagnetizing time of 0.8 seconds the when combined with one of our hydraulic magnet generators.



OPTIONS:

- Claws.
- Quick hitch mount.
- Grapple mount.
- Additional power outlet on magnet.
- Rectangular shapes.
- High power models.
- Underwater models.
- Available in the ED100 model for continuous long magnetizing periods.

FEATURES:

- Models range from 5.5 to 70 ton magnetic tear-off force.
- Increase productivity with the world's fastest demagnetizing time 0.8 of a second when combined with our hydraulic magnet generators.
- Robust, high-quality structure.
- Easy to install and use with a single plug connection.
- Lightweight and low profile make the magnet more user friendly.
- Generator protected from shock damage.
- Magnetic power reduction feature available.
- Controlled via a remote mounted electric switch.
- Includes lifting chains and electrical cable.



		MAG 700	MAG 900	MAG 1000	MAG 1200	MAG 1400	MAG 1500
Diameter	mm	750	960	1,050	1,260	1,400	1,550
Height	mm	215	250	300	305	285	390
Weight	kg	290	650	850	1,100	1,400	2,950
Max Magnet Coil Power	kW	3.0	4.9	5.5	9.0	10.0	12.5
Operating Voltage	VDC	220	220	220	220	220	220
Magnet Coils Resistance	Ohm	16.1	9.9	8.8	5.4	4.8	3.9
Tear Off	kg	5,500	10,500	16,000	15,000	18,000	42,000
Metal Slab	kg	2,700	5,250	8,000	7,500	9,000	17,000
Scrap (Grade 24)	kg	70	190	290	360	510	1,200

MAGNET GENERATORS.

Our remote mounted magnet generators provide a stable and reliable source of electricity for any lifting magnet. Guaranteed to increase your productivity with the world's fastest demagnetizing time of 0.8 seconds the when combined with one of our lifting magnets.



OPTIONS:

- Wiring kits for cabin controller.
- Magnet cable kits.
- Additional auxiliary power outlets.
- Larger models available up to 40 kW.

FEATURES:

- Magnet generator can be installed anywhere on the machine because it operates with a compact hydraulic motor instead of a belt drive.
- Easy to install and operate.
- Compact design with the world's best power-to-size ratio.
- Reliable and durable construction with weatherproof housing making it possible to mount anywhere on the vehicle or equipment.
- Ideal power source for any lifting magnet.
- Maintenance-free reduces operational costs and downtime.
- Can be controlled either electrically or hydraulically via a remote mounted switch.
- Suitable for any hydraulic system provided it meets the minimum flow and pressure requirements.
- Digital screen to provide generator operating status.

		HMG PRO 3	HMG PRO 6	HMG PRO 10	HMG PRO 12	HMG PRO 15	HMG PRO 20
Width	mm	337	326	325	460	501	511
Length	mm	431	526	582	580	828	878
Height	mm	317	351	355	375	416	416
Weight	kg	34	58	60	100	145	163
Generator Output	kW	3	6	10	12	15	20
Max Magnet Coil Power	kW	3	5.5	9.1	11	13.5	18.6
Magnet Coil Resistance	Ohm	15 - 100	8.8 - 100	5.4 - 100	4.5 - 50	3.6 - 50	2.6 - 50
Operating Voltage	VDC	220	220	220	220	220	220
Min Hydraulic Flow	l/min	23	37	53	63	67	94
Max Hydraulic Flow	l/min	37	53	68	77	95	110
Operating Hydraulic Pressure	bar (psi)	210 (3,050)	160 (2,320)	200 (2,900)	200 (2,900)	190 (2,760)	190 (2,760)
Max Hydraulic Pressure	bar (psi)	350 (5,080)	350 (5,080)	350 (5,080)	350 (5,080)	350 (5,080)	350 (5,080)



PISTON AIR COMPRESSORS.



Simple to install and easy to operate is just one reason our hydraulic piston air compressors are trusted by many contractors and service companies around the world. A fully integrated air reservoir adds to the already ultra-compact design saving every inch of valuable storage space. With models ranging from 15 to 35 cfm, you can remove large and unreliable auxiliary engines by installing one of the most versatile pieces o

OPTIONS:

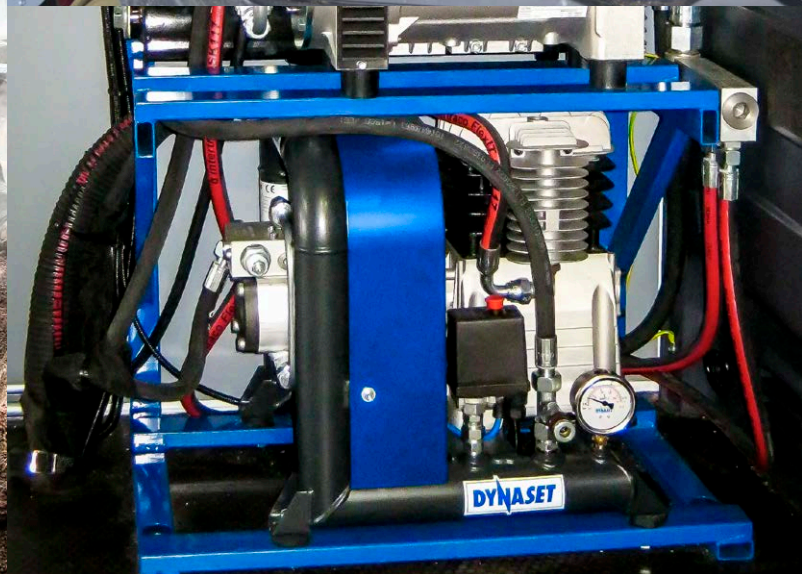
- Integrated hydraulic flow limiting valve.
- Pneumatic unloader valve.
- Electrical controlled pressure cut off valve.
- Pneumatic controlled pressure cut off valve.
- Solenoid valve to start and stop the compressor.
- High capacity cyclone air filter.
- Additional breather tank.
- Aftercooler.
- Additional hose reels.

FEATURES:

- The fully integrated hydraulic motor removes the need for an auxiliary engine saving on capital and operational expenditure.
- An ultra low maintenance design reduces downtime and operating costs.
- Easy to install and operate on any hydraulic system.
- The simple and robust structure increases reliability.
- The compact design is many times smaller than traditional piston compressors with similar output.
- Best suited for applications with intermittent use.
- The air reservoir is built into the compressors frame reducing the overall size.
- The integrated air cooler ensures maximum reliability even in extreme conditions.

		HK 450	HK 1000
Width	mm	422	490
Length	mm	508	710
Height	mm	423	605
Weight	kg	35	80
Max Discharge Flow	cfm (l/min)	15.9 (450)	35.3 (1,000)
Max Discharge Pressure	bar (psi)	8 (116)	12 (174)
Air Tank Reservoir	l	4.3	14
Air Outlet Connection		BSP 1/2"	BSP 1"
Min Hydraulic Flow	l/min	10	12
Operating Hydraulic Flow	l/min	15	35
Max Hydraulic Flow	l/min	21	50
Operating Hydraulic Pressure	bar (psi)	130 (1,890)	210 (3,050)
Max Hydraulic Pressure	bar (psi)	210 (3,050)	230 (3,340)





ROTARY SCREW AIR COMPRESSORS.



Our range of extremely compact hydraulic rotary screw air compressors boast the worlds best power to size ratio and are designed for demanding 24/7 applications. Replace large and heavy outdated air compressors with a state of the art solution that is guaranteed to improve performance and reliability. The fully integrated hydraulic cooling system removes additional components and greatly improves reliability and efficiency.

OPTIONS:

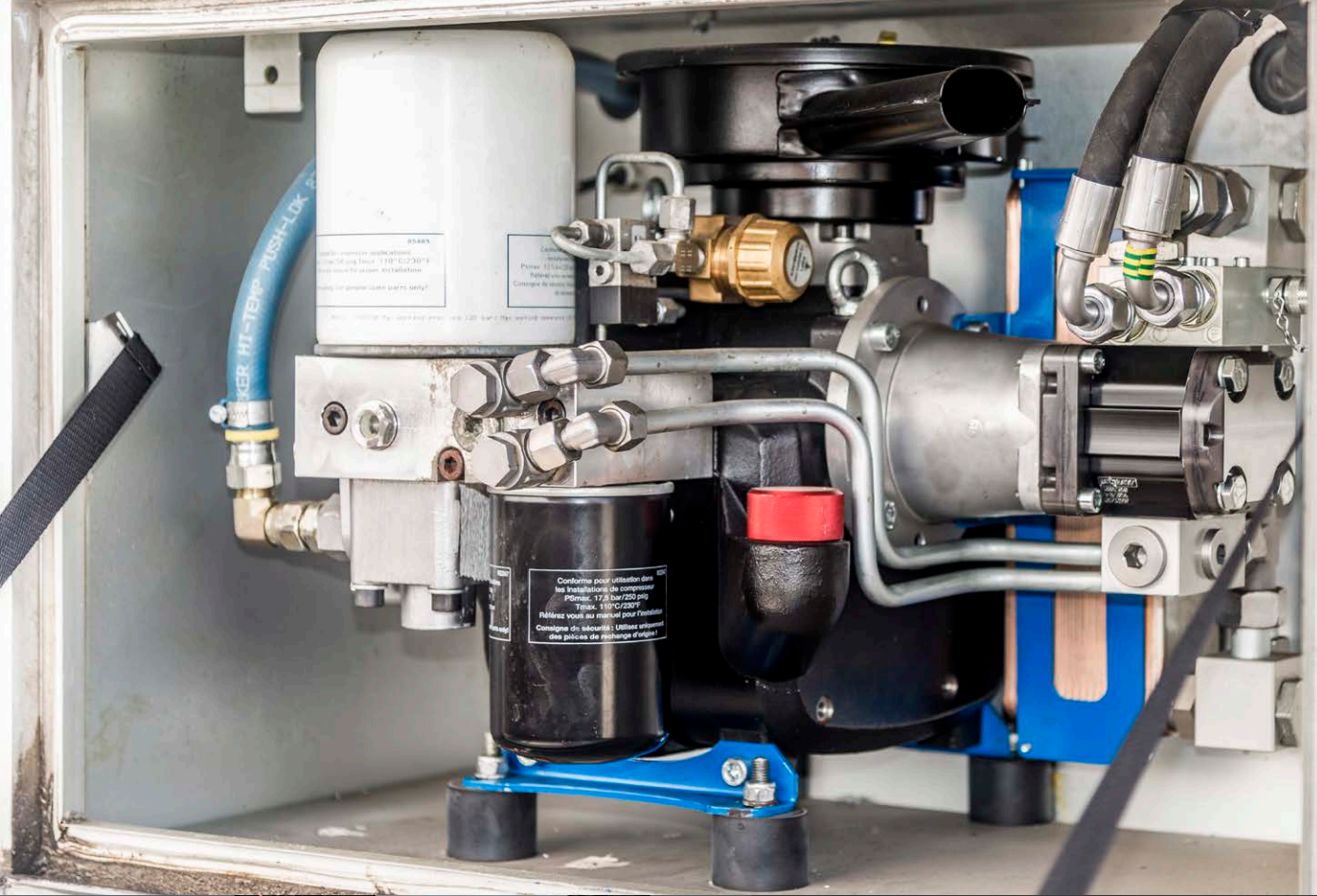
- High capacity cyclone air filters.
- Over-temperature cut off valve.
- Air / water separators.
- Air reservoir.
- Aftercooler.
- Additional hose reels.

FEATURES:

- Compact design with the world's best power-to-size and power-to-weight ratios.
- Designed for demanding, continuous 24/7 usage at maximum capacity.
- The air compressor transfers any heat to the hydraulic system removing the need for any additional cooling equipment. This also means that there is no cleaning required for the compressors cooler core.
- When the demand on the compressor drops it runs at idle speed requiring only a minimal amount of hydraulic oil circulation which results in fuel savings.
- The fully integrated hydraulic motor is designed to be more efficient and durable with less mechanical friction and a lower operating temperature.
- The silent hydraulic motors are designed to produce a sound level that is not only significantly lower but with an improved sound structure and frequency level which result in the motor almost sounding silent. The better sound characteristics drastically improve the working environment and user ergonomics.
- The hydraulic motor's shaft seal is designed for higher pressure endurance.
- Simple, quick installation without the need for any additional tanks or containers.
- Easy access and simple maintenance components reduce servicing time and costs.
- No external moving parts.

		HKR 500	HKR 600	HKR 800
Width	mm	350	371	350
Length	mm	450	490	450
Height	mm	390	461	390
Weight	kg	43	43	43
Max Discharge Flow	cfm (l/min)	17.7 (500)	21.2 (600)	28.3 (800)
Max Discharge Pressure	bar (psi)	10 (145)	15 (218)	10 (145)
Air Outlet Connection		BSP 1/2"	BSP 1/2"	BSP 1/2"
Min Hydraulic Flow	l/min	19	16	21
Max Hydraulic Flow	l/min	30	30	45
Operating Hydraulic Pressure	bar (psi)	130 (1,890)	195 (2,830)	135 (1,960)
Max Hydraulic Pressure	bar (psi)	230 (3,340)	230 (3,340)	230 (3,340)





HKR 1300	HKR 2000	HKR 2500	HKR 4000	HKR 5000	HKR 7500	HKR 11000
455	455	455	520	520	622	799
490	490	490	650	670	779	1603
453	453	453	574	574	722	946
74	74	74	137	137	270	377
45.9 (1,300)	70.6 (2,000)	88.3 (2,500)	141.3 (4,000)	176.6 (5,000)	264.9 (7,500)	388.5 (11,000)
10 (145)	10 (145)	10 (145)	10 (145)	10 (145)	10 (145)	10 (145)
BSP 3/4"	BSP 3/4"	BSP 3/4"	BSP 1"	BSP 1"	BSP 1 1/2"	BSP 2"
27	30	35	55	60	70	115 / 165
40	55	80	105	140	200	190 / 275
205 (2,970)	205 (2,970)	205 (2,970)	215 (3,120)	210 (3,046)	230 (3,340)	345 / 230 (5000 / 3,340)
230 (3,340)	230 (3,340)	230 (3,340)	230 (3,340)	230 (3,340)	270 (3,920)	380 (5,510)

HIGH PRESSURE WATER PUMPS.

Compact in size, lightweight, durable construction and low water consumption are just a few reasons why our hydraulic high-pressure water pumps are recognised as the ultimate tool to help increase productivity and reduce costs. The patented design which is completely free of rotating parts means it can run dry for extended period's of time without compromising the high standard of reliability that is needed in today's environment.



OPTIONS:

- Models without unloader valve or pressure gauge.
- Suction hose kit with water filter.
- Washing guns.
- Retractable hose reels.
- Sub-sea models.
- Flow limiting valves.
- Solenoid valve with oil flow limiter.

FEATURES:

- Ultra-compact design boasting the worlds best power-to-size and power-to-weight ratio for any high-pressure water pump.
- No rotating parts improves the reliability and removes the need for separate lubrication or cooling.
- Can be used with dirty water, seawater, chemicals or other fluids.
- Cooled and lubricated by the hydraulic fluid making it safe to run dry for an unlimited length time.
- High-grade materials to ensure a long-lasting product.
- Self-priming up to 3m.
- Linear water flow adjustable from 0% - 100% by controlling the hydraulic flow.
- Low water consumption.
- Can be connected in series or in parallel to gain higher water flow or pressure.
- Built-in unloader valve and pressure gauge.

		HPW 250	HPW 420	HPW 220	HPW 90	HPW 520
Width	mm	238	245	280	345	290
Length	mm	167	160	170	175	140
Height	mm	179	155	185	250	175
Weight	kg	11	16	18	31	22
Max Discharge Flow	l/min	30	20	50	150	30
Max Discharge Pressure	bar (psi)	250 (3,630)	420 (6,090)	220 (3,190)	90 (1,310)	520 (7,540)
Output Power	kW	12.5	14	18.5	22.5	26
Max Hydraulic Flow	l/min	40	50	70	85	85
Operating Pressure	bar (psi)	250 (3,630)	210 (3,050)	210 (3,050)	210 (3,050)	210 (3,050)
Max Hydraulic Pressure	bar (psi)	260 (3,770)	220 (3,190)	210 (3,050)	210 (3,050)	250 (3,630)
Max Suction Head	m	3	3	3	3	3

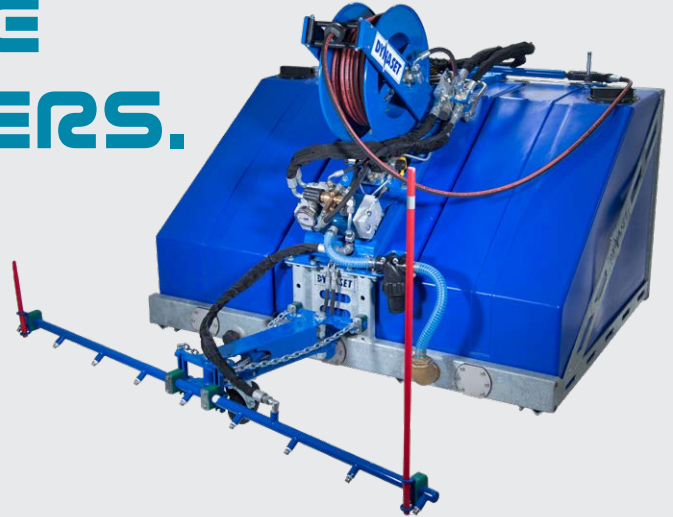




HPW 180	HPW 460	HPW 320	HPW 130	HPW 800	HPW 1600	HPW 1000	HPW 360	HPW 300	HPW 1200
330	314	344	400	340	405	379	745	745	915
240	195	250	175	195	195	168	270	270	265
175	197	282	270	195	160	194	360	360	350
28	32	32	35	39	36	39	170	170	177
90	50	75	180	30	15	30	220	300	100
180 (2,610)	460 (6,670)	320 (4,640)	130 (1,890)	800 (11,600)	1,600 (23,200)	1,000 (14,500)	360 (5,220)	300 (4,350)	1,200 (17,400)
27	38	40	39	40	40	50	132	150	200
115	115	125	140	140	140	140	360	350	440
210 (3,050)	240 (3,480)	240 (3,480)	240 (3,480)	210 (3,050)	230 (3,340)	260 (3,770)	250 (3,630)	350 (5,080)	300 (4,350)
210 (3,050)	250 (3,630)	250 (3,630)	250 (3,630)	210 (3,050)	230 (3,340)	280 (4,060)	250 (3,630)	350 (5,080)	350 (5,080)
3	3	3	3	2	0	0	3	3	0

HIGH PRESSURE STREET WASHERS.

Increase your capabilities and productivity by using our state of the art high-pressure street washers. High-pressure water digs dust and sand out from the pores in asphalt, concrete and similar surfaces. This way the surface will not emit dust after drying. Compact size, lightweight and low water consumption make our unit a cost-saving and work efficient solution.



OPTIONS:

- Many mount solutions for any vehicle or equipment.
- Models without water tanks or remotely mounted tanks.
- Water heating solutions for steam cleaning.
- A large variety of water pumps including high flow models are available.

FEATURES:

- Deep cleans surfaces by using high-pressure water which digs dirt and dust out from the pores in asphalt, concrete and similar surfaces. This way the surface will not emit dust after drying.
- Eliminates dust when cleaning reducing hazards for the worker and public.
- Low water consumption increases productivity by reducing the time spent filling water tanks.
- Water pressure is generated through our world-renowned hydraulic high-pressure water pumps.
- Control of water flow and pressure from 0% - 100% gives greater flexibility to the range applications our street cleaners can be used in.
- Easily operated from within the vehicle cabin with a clear field of view.
- Moving washing head giving control of the direction of cleaning.
- Includes a washing gun for handheld cleaning.
- Quick hitch and attachment options for quick and easy setup on-site.
- An all-in-one compact and lightweight design saves space and time.

		KPL-S-250	KPL-M-250
Width	mm	1042	960
Length	mm	960	1,655
Height	mm	1,143	1,100
Weight	kg	80	212
Working Width	mm	1,500	1,800
Water Tank	l	270	540
Max Discharge Flow	l/min	30	30
Max Discharge Pressure	bar (psi)	250 (3,630)	250 (3,630)
Max Hydraulic Flow	l/min	40	40
Max Hydraulic Pressure	bar (psi)	210 (3,050)	210 (3,050)





KPL-L-250	KPL-L-220	KPL-XL-220	KPL-XL-90	KPL-XL-180
1,438	1,438	1,916	1,916	1,916
1,655	1,655	1,655	1,655	1,655
1,100	1,100	1,100	1,100	1,100
215	225	302	312	312
1,800	2,000	2,500	2,500	2,500
810	810	1,080	1,080	1,080
30	50	50	150	90
250 (3,630)	220 (3,190)	220 (3,190)	90 (1,310)	180 (2,610)
40	70	70	85	115
210 (3,050)	210 (3,050)	210 (3,050)	210 (3,050)	210 (3,050)

SUBMERSIBLE PUMPS.

Compact in size while rugged and durable in design, makes it the perfect attachment for any mobile machine such as excavators, tractors and other earthmoving machinery. These hydraulic submersible pumps have a higher efficiency and a better power to size ratio compared to traditional electric pumps, increasing productivity and in turn increasing profits.



OPTIONS:

- Camlock hose fittings.
- One way valve on the bottom of the pump to retain pumped fluid.
- Hydraulic hose kits.
- Flow limiting valves.
- Solenoid valve with oil flow limiter.

FEATURES:

- Powered by the base machines hydraulic system removes the need for any electricity eliminating any health and safety risk of electric shock.
- The pump's impeller is made from hardox meaning it is easily able to tolerate solids and abrasive substances making for carefree operation.
- Greasable bearings allow the pump to run dry without causing any damage to bearings or seals.
- The rugged design, low maintenance structure and no wearing parts ensure the pump is a long-lasting solution designed to continue pumping for years to come.
- A mesh grate prevents any debris from clogging the pump motor. The grate can be easily removed for maintenance or cleaning of the pump.
- A light weight and compact design allows for access to confined spaces like pile holes.



		HSP 600	HSP 1500
Diameter	mm	140	350
Height	mm	510	700
Weight	kg	7	15
Max Discharge Flow (0m Head)	l/min	800	2,000
Max Discharge Flow (5m Head)	l/min	600	1,500
Max Pumping Head	m	30	25
Outlet Connection		2"	3"
Max Hydraulic Flow	l/min	38	40
Max Hydraulic Pressure	bar (psi)	260 (3,770)	180 (2,610)



HSP 2600	HSP 4000	HSP 7000	HSP 10000	HSP 16000
350	450	450	500	650
700	900	900	1,100	1,250
20	45	54	70	85
3,000	5,000	8,000	12,000	20,000
2,600	4,000	7,000	10,000	16,000
35	30	35	35	35
3"	5"	5"	6"	8"
50	100	169	200	317
250 (3,630)	250 (3,630)	350 (5,080)	350 (5,080)	350 (5,080)

VIBRATORS.

Our hydraulic vibration units give you a competitive edge by enhancing the performance of the base machine. Used in bucket emptying, soil compacting, asphalt cutting, and pile driving, the vibration device can triple the impact of the base machine. This patented technology allows us to help contractors and machinery operators increase their productivity without compromising reliability.



OPTIONS:

- Flow limiting valves.
- Solenoid valve with oil flow limiter.
- Additional specialised models available.

FEATURES:

- Boosts the performance of an excavator cost-effectively without compromising reliability.
- Improves efficient working with a smaller excavator.
- Allows a compact excavator to perform equally well as a larger excavator.
- Diversifies the use of an excavator in different applications.
- Works easily by the push of a joystick's button.
- HVB is connected directly into the hydraulic cylinder and sends a pulse of hydraulic fluid making the cylinder vibrate in the desired motion.
- HVD is a standalone, directional vibrating unit that can be mounted onto any piece of machinery to make it vibrate.



		HVB 350/9	HVB 350/18	HVB 350/27	HVD 18/55	HVD 70/35
Width	mm	115	115	115	80	135
Length	mm	253	253	253	225	278
Height	mm	130	130	130	122	183
Weight	kg	13	13	13	13	40
Frequency	Hz	30	23	19	55	35
Max Vibration Force	kN	-	-	-	18	70
Piston Displacement	cm ³	9	18	27	-	-
Max Hydraulic Flow	l/min	40	60	80	85	85
Operating Pressure	bar (psi)	350 (5,076)	350 (5,076)	350 (5,076)	210 (3,046)	210 (3,046)



HYDRAULIC POWER PACKS.



Our hydraulic power packs are designed to give years of reliable service with minimal maintenance. Standard with integrated hydraulic oil coolers and return filters help create the ultimate package. With every engine and hydraulic pump been closely matched to optimize system performance, fuel efficiency and service life, these power packs are the ultimate addition to your work site.

OPTIONS:

- Electrically driven models.
- Many different coupling options.
- Built-in accessories like generators or high-pressure water pumps.

FEATURES:

- Compact design with smaller models having the ability to fit through tight doorways.
- Rubber wheels and fold-down handles for easy transport around site on smaller models.
- Heavy duty frame designed to protect the engine and hydraulic system from harsh conditions.
- Temperature controlled, air-cooled radiator for the hydraulic system to prevent the system from overheating.
- Electric engine start for ease of use.
- The integrated oil reservoir with an oil filter ensures no impurities can travel through the system.
- Two pairs of outlets give the ability to run multiple pieces of equipment or tooling at the same time.
- Electrically driven models also available on request.
- We can also design and build systems to clients specific needs.



		HPU 38	HPU 55
Width	mm	510	906
Length	mm	720	1621
Height	mm	650	982
Weight	kg	130	650
Engine Size	cc	479	-
Engine Power	hp (kW)	18 (13.4)	74 (55)
Max Hydraulic Flow	l/min	38	150 / 210
Max Hydraulic Pressure	bar (psi)	210 (3,050)	350 (5,080)



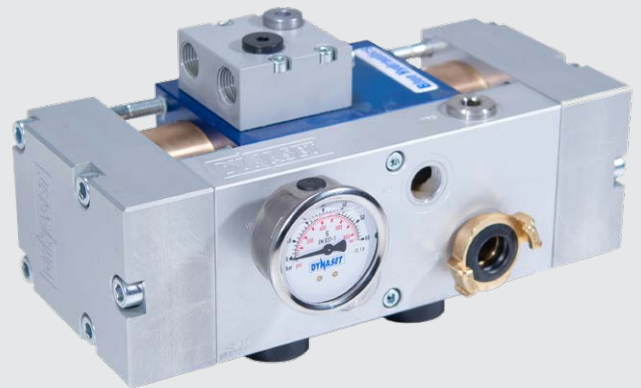
PIPE CLEANING.

Our hydraulic pipe cleaning unit is a great machine for cleaning & flushing pipes & sewers. High-pressure water is pumped through the hose and jets from the special nozzle propel it through the pipe. After use, the hose can be hydraulically rewound onto the hose reel. Capable of 100 m horizontal & 20 m vertical effective cleaning lengths.



DRILLING FLUID PUMP.

Based on our legendary high-pressure water pumps, these drilling fluid pumps are built for performance and reliability. Constructed from premium noncorrosive materials makes it possible to pump chemicals and drilling fluids without compromising the durability of the pump.



DUST SUPPRESSION.

An atomised high-pressure water mist results in the most effective form of dust suppression. Ultra-low water consumption and targeted flow direction make this the ultimate solution for many contractors. We can custom design the ultimate solution for any piece of machinery from a road sweeper to a rock crusher or demolition excavator.



HYDRAULIC WINCH.

The hydraulic winch is a compact unit designed for on-surface water, gas, and oil pipe installations without digging. A range of models capable of pulling up to 30 tons makes light work of demanding tasks. Available as standalone units or as a completely mobile solution mounted on rubber tracks.



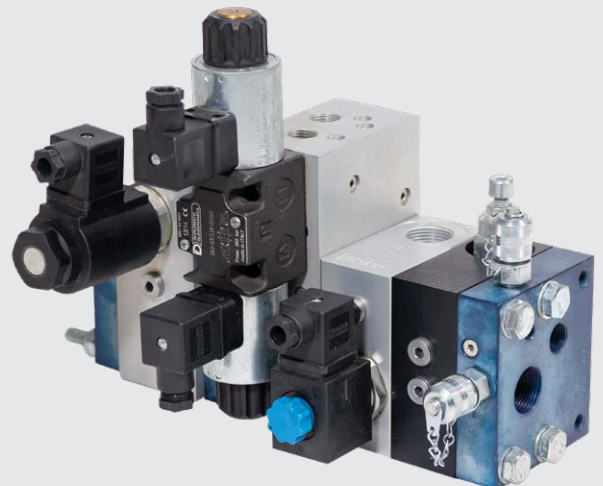
POWER BOOSTER.

Would you like to have more cylinder force? Hydraulic Pressure Intensifier boosts the hydraulic pressure of hydraulic cylinders by using the power from the base machine's hydraulic system. With pressure levels are adjustable up to 700 boosts the power of attachment tools such as pulverizers and enables the use of bigger hydraulic tools with smaller hydraulic systems.



INSTALLATION VALVES.

We have a range of installation valves to guarantee easy setup and operation of our equipment. From pressure and flow restrictor's too load sensing and priority valves, we have a large range of options to cover every application. We also offer a modular system which is a combination of different valve blocks that are sandwiched together resulting in endless possibilities.





Beattys



Optimal Performance
Whatever the Challenge

0800 800 852

beattys.com

enquiries@beattys.com

